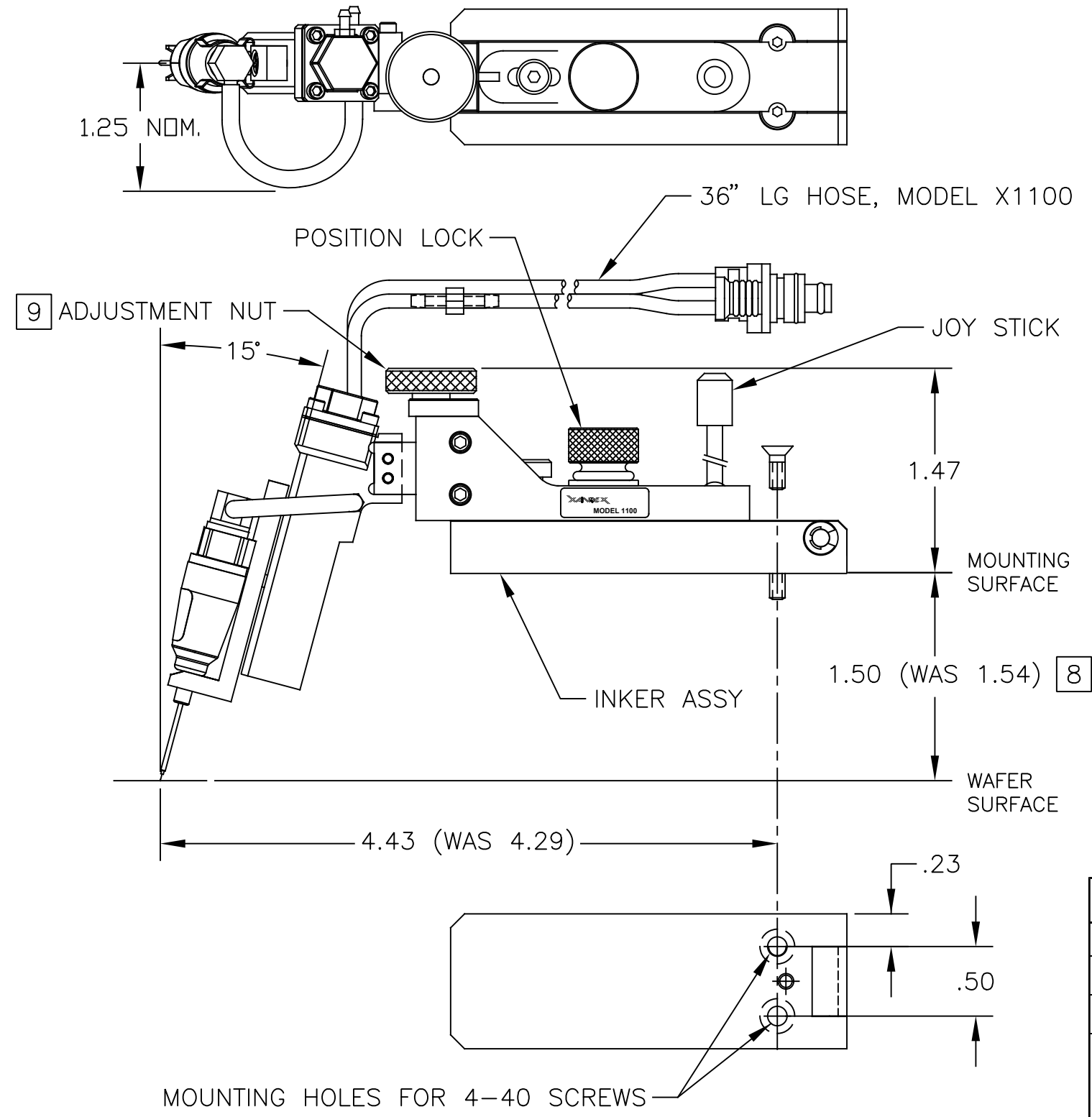



©Copyright Xandex Inc., All Rights Reserved.
 The information disclosed herein is deemed to be confidential, proprietary, and a trade secret of Xandex, Inc. This information may not be used, reproduced or disclosed without the express prior written consent of Xandex, Inc.

REVISIONS					
REV	DESCRIPTION	CHANGE NUMBER	BY	DATE	APPROVED
A	INITIAL RELEASE (3)	4526	MRW	05/16/22	



NOTES:

1. INKER FOR ELECTROGLAS PROBER, OFF LINE OR CABLED PROBING.
2. THIS INKER USES THE DM-2 CARTRIDGE ONLY.
3. INKER ARM IS ADJUSTABLE ALONG THE "Z" AXIS BY $\pm .188$.
4. JOYSTICK PROVIDES "X" AND "Y" AXIS MOVEMENT AT THE TIP OF THE CARTRIDGE NEEDLE.
5. ALL DIMENSIONS SHOWN WITH ADJUSTMENTS IN NEUTRAL POSITION.
6. INKER MOUNTS TO THE PROBER USING (2) 4-40 X 5/16 FLAT HEAD SCREWS (SUPPLIED).
7. ORDER SET NUMBER 340-1100, FOR MAGNETIC SWING ARM TO BASE RETENTION. ORDER SET NUMBER 340-1105 FOR DETENT SWING ARM TO BASE RETENTION.
8. THE 1.54 TO 1.50 SHIFT CAN BE RESOLVED IN INKER BASE Z-ADJUSTMENT.
9. Z-ADJUST RESOLUTION IS 80 THREADS PER INCH.
10. THE WEIGHT OF THE ASSEMBLY HAS INCREASED 8 GRAMS.

APPROVALS	DATE	ITEM	QTY	PART NUMBER	DESCRIPTION
DRAWN MRW	11/10/21	INTERPRET DRAWING			 1360 REDWOOD WAY, SUITE A PETALUMA, CA 94954 (707) 763 7799
CHECKED File Approved per DCA#147		PER ASME Y14.5M-1982			
ENGRG J. THOMAS	11/10/21	TOLERANCES UNLESS OTHERWISE SPECIFIED			
NEXT ASSEMBLIES.....USED ON		DIMENSIONS ARE IN INCHES		TITLE	
340-1100		DECIMALS		OD DWG PNEU INKR	
340-1101		1 PL \pm FRACTIONS \pm		X1100 SERIES	
		2 PL $\pm .010$ ANGLES $\pm 1^\circ$		DO NOT SCALE DRAWING	
		3 PL $\pm .005$		SIZE B SCALE 1/1 SHEET 1 of 1 DRAWING NUMBER 900-0221 REV A	
		4 PL \pm 63/100 ALL SURFACES			