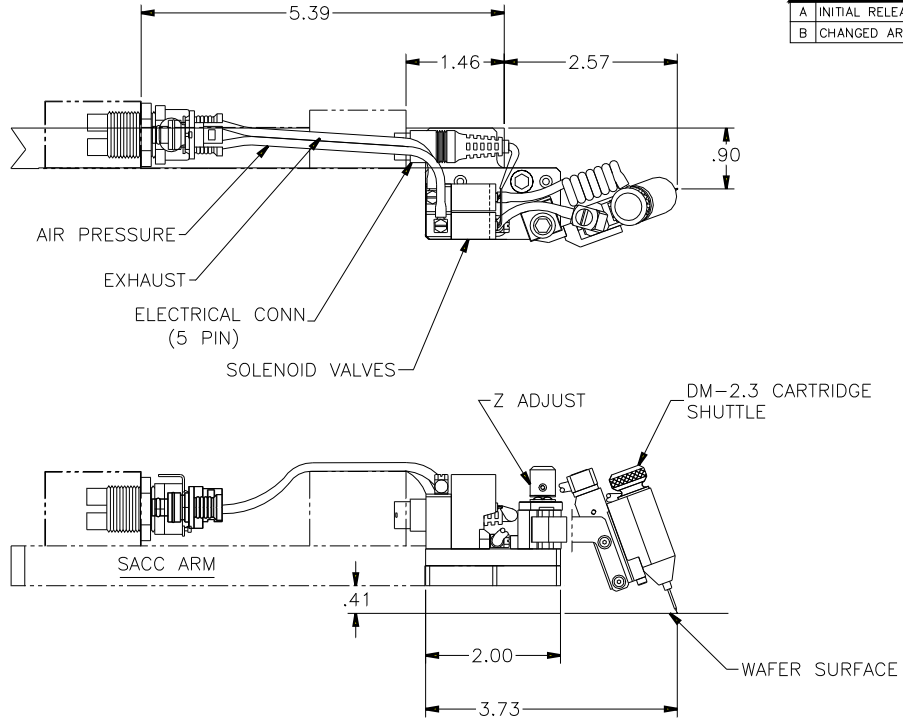


Copyright Xanbex Inc. All Rights Reserved.  
 The information disclosed herein is deemed to be confidential, proprietary, and a trade secret of Xanbex, Inc. This information may not be used, reproduced or disclosed without the express written consent of Xanbex, Inc.

REVISIONS					
REV	DESCRIPTION	ECO	BY	DATE	APPROVED
A	INITIAL RELEASE	1277	JMc	10/30/96	DT
B	CHANGED ARM/KNOB	1434	JMc	03/18/97	



NOTES:

1. INKER IS FOR USE ON TEL P8 SERIES PROBERS.
2. INKER INSTALLS ON PROBER SACC ARM.
3. RETROFIT KIT IS REQUIRED, CONTACT TOKYO ELECTRON FOR FURTHER INFORMATION.
4. INKER USES DM2.3 CARTRIDGE.
5. SHUTTLE TRAVELS .050/.060 FROM POSITION SHOWN TO DEPOSIT INK ON WAFER, INKER IS SHOWN IN NOMINAL INKING POSITION WITH Z ADJUSTMENT CAPABILITY OF  $\pm 0.100$
6. INKER HAS NO X-Y ADJUSTMENT CAPABILITY.
7. ORDER INKER KIT PART NUMBER 340-5200.

FILE NAME 9005200B	ITEM APPROVALS	QTY DATE	PART NUMBER INTERPRET DRAWING	DESCRIPTION 1125 N. McDOWELL BLVD. PETALUMA, CA 95954 (707) 763 7799
	BY JMc	10/30/96	PER ANSI Y14.5 - 1982	<b>XANBEX</b> TITLE PNEUMATIC INKER, TEL P8 SACC ARM DO NOT SCALE DRAWING
			TOLERANCES UNLESS OTHERWISE SPECIFIED	
			DIMENSIONS ARE IN INCHES DECIMALS	
			ANGLES $\pm 1^\circ$ 63° ALL SURFACES	
			UNLESS OTHERWISE SPECIFIED NEXT ASSUMPTION USED ON 340-5200	
			FRACTIONS $\pm$	
			1 PL $\pm$	
			2 PL $\pm .010$	
			3 PL $\pm .005$	
			4 PL $\pm$	
			SIZE C	SCALE 1/1
			SHEET 1	OF 1
			DRAWING NUMBER 900-5200	REV B