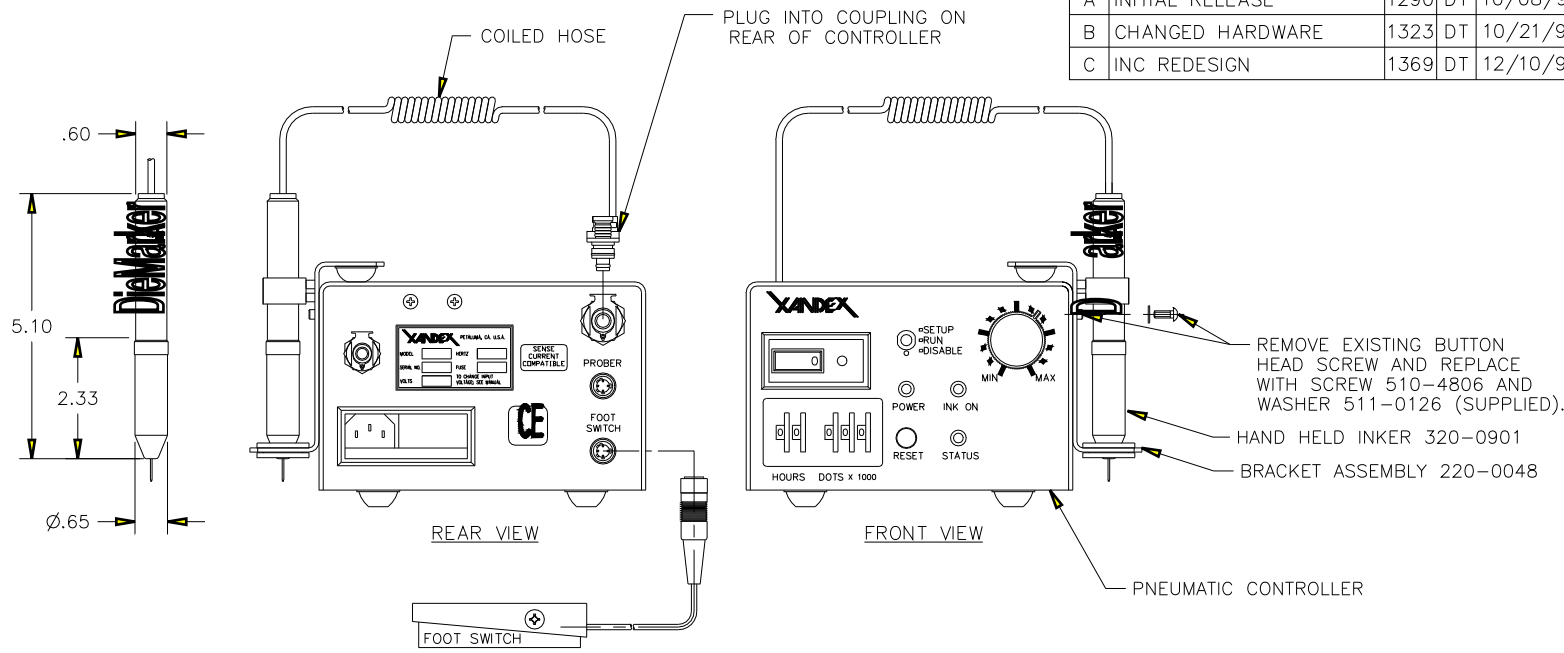



©Copyright Xandex Inc., All Rights Reserved.
 The information disclosed herein is deemed to be confidential, proprietary, and a trade secret of Xandex, Inc. This information may not be used, reproduced or disclosed without the express prior written consent of Xandex, Inc.

REVISIONS					
REV	DESCRIPTION	ECO	BY	DATE	APPROVED
A	INITIAL RELEASE	1290	DT	10/08/96	DT
B	CHANGED HARDWARE	1323	DT	10/21/96	DT
C	INC REDESIGN	1369	DT	12/10/96	



NOTES:

1. INKER IS DESIGNED FOR HAND INKING OF DEFECTIVE DIE.
2. INKER USES STANDARD DM-2 CARTRIDGES.
3. INKER IS USED WITH PNEUMATIC CONTROLLER, PART NUMBER 350-0002.
4. SEE OPERATING MANUAL-NUMBER 820-0057 FOR USER INSTRUCTIONS AND PRODUCT SPECIFICATIONS.
5. FOR COMPLETE INKER KIT (INCLUDING CONTROLLER), ORDER PART NUMBER 340-0901. FOR INKER ONLY, ORDER PART NUMBER 320-0901.

FILE NAME 9000181C	ITEM	QTY	PART NUMBER	DESCRIPTION
APPROVALS	DATE	INTERPRET DRAWING		 1125 N. McDOWELL BLVD. PETALUMA, CA 95954 (707) 763 7799
DRAWN D. TEGLIA	10/03/96	PER ANSI Y14.5 - 1982		
CHECKED		TOLERANCES		
ENGRG		UNLESS OTHERWISE SPECIFIED DIMENSIONS ARE IN INCHES		
ENGRG		DECIMALS		TITLE PNEUMATIC INKER, MODEL 901 "DieMarker"
NEXT ASSEMBLIES.....USED ON 320-0901				DO NOT SCALE DRAWING
		1 PL ±	FRACTIONS ±	SIZE B
		2 PL ±	ANGLES ±	SCALE 1/2
		3 PL ±	ALL SURFACES	SHEET 1 of 1
		4 PL ±		DRAWING NUMBER 900-0181
				REV C